

13'1" x 16'11" deck with Lightboxes • Total height 17'4"

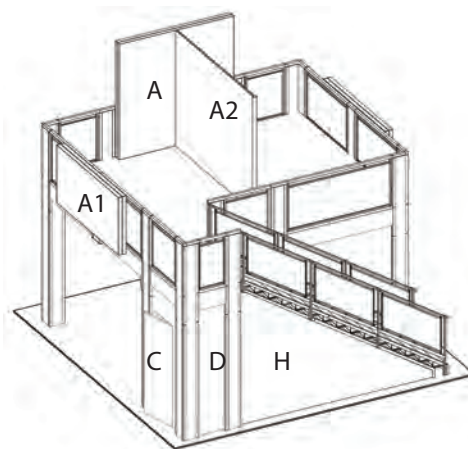
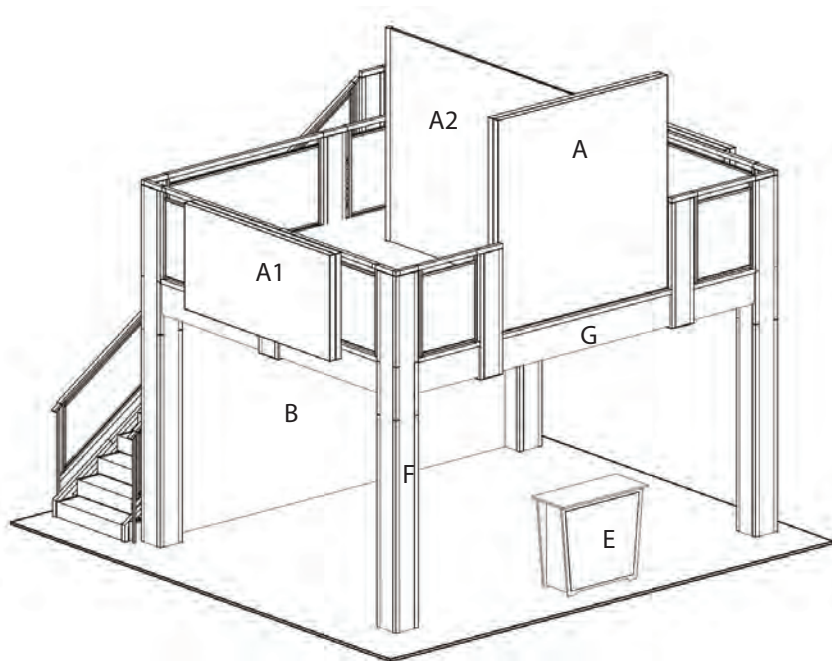
13 x 17 double deck rental to include:

- (1) 13'1" x 16'11" second level with extended landing and straight staircase
- (1) 184" wide backwall with storage closet under stairs
- (1) "EV2" locking standalone counter, 46"w x 20"d black laminate top
- (1) large format lightbox wall on front of deck
- (2) rail mount lightboxes
- (1) adjustable divider wall upstairs
- (1) gray sintra ceiling with 16 track lights
- (1) 1/4" thick frosted plex rail infills

CHOICE of black, white, or gray sintra provided standard for all solid infill walls that do not have graphics, unless described otherwise

*White laminate standard for EV2 wall counter sides and standalone counter front and sides

Consult your account rep for options. Additional elements, merchandising and graphics are available

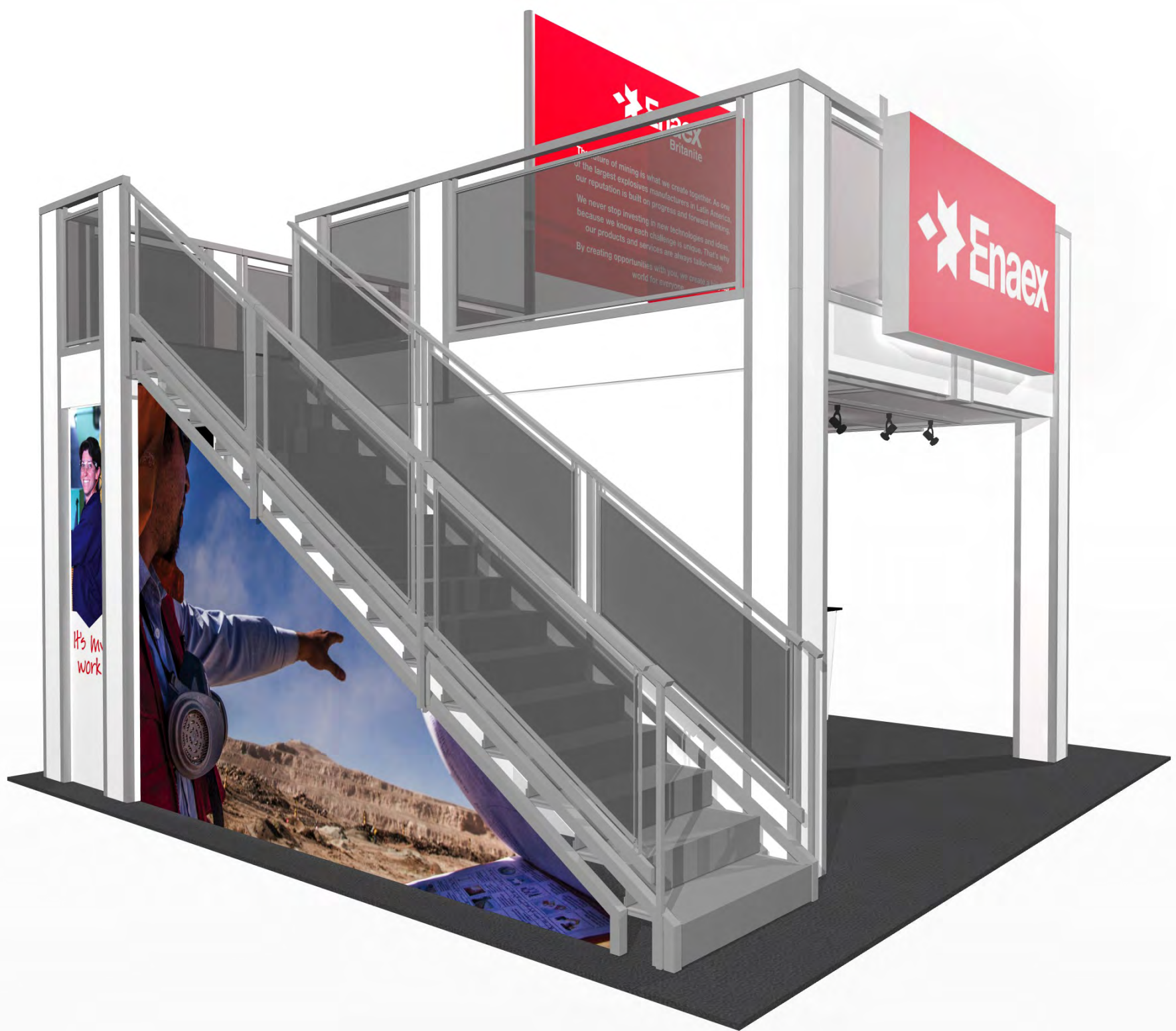


GRAPHIC SPECS

- A. - (2) 92"w x 92" h Backlit Fabric Graphic
- A1. - (2) 92"w x 46" h Backlit Fabric Graphic
- A2. - (2) 115"w x 92" h Sintra Graphic
- B. - (1) 183.5"w x 99" h Sintra Graphic (Back Wall)
- C. - (1) 38.5" w x 99" h Sintra Graphic (with door)
- D. - (1) 22.5" w x 99" h Sintra Graphic
- E. - (1) 40" w x 35" h Counter Graphic
- F. - (46 pieces total) 7-7/8" wide x various height column infill (4 sides per column plus upstairs inside) 1 example piece notated
- G. - (11 pieces total) various widths x 14" high beam covers) 1 example piece notated
- H. - angle wall beneath stairs

PRICING DOES NOT INCLUDE chairs, benches, tables, computers, monitors/cables, and carpet. Additional elements, merchandising and graphics are available through your account representative.

Please follow our graphic file submission guidelines for all printed elements to avoid resubmission requests and delay. Allow at least 10 business days for graphic production.



Enaex
Britanite

The future of mining is what we create together. As one of the largest explosives manufacturers in Latin America, our reputation is built on progress and forward thinking. We never stop investing in new technologies and ideas, because we know each challenge is unique. That's why our products and services are always tailor-made. By creating opportunities with you, we create a better world for everyone.

Enaex



It's my work

Enaex

Enaex

Enaex
A high level of safety and
efficiency. In any and every
project, Enaex provides the
best solutions for your
business. We are a leader in
the energy industry and
we are committed to
providing the best service
and support to our
customers.





A brighter definition of success is already within reach. We know about making mines more productive through custom blasting solutions and long-term partnerships, but our vision doesn't end there.

We strive to create healthier lifestyles for people in the industry, minimizing risk and uplifting families.

These commitments and aspirations have made us a world leader in low-density ammonium nitrate production and fully integrated rock fragmentation services.

It's m
sibility





Enaex
Britanite

Enaex

Enaex

Enaex
Britanite

It's my responsibility

A brighter definition of success is already within reach. We know about making mines more productive through custom blasting solutions and long-term partnerships, but our vision doesn't end there.

We strive to create healthier lifestyles for people in the industry, minimizing risk and uplifting families.

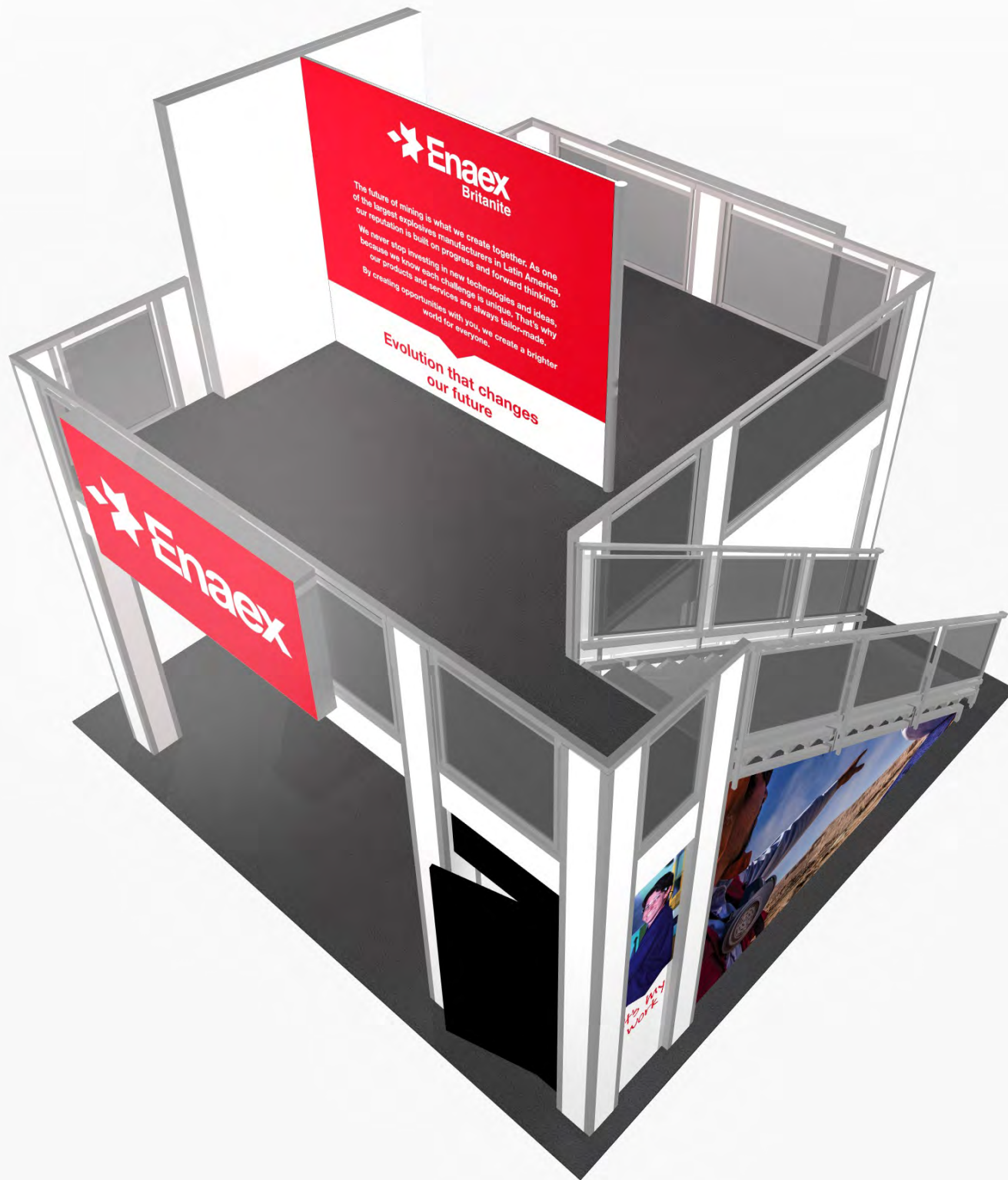
These commitments and aspirations have made us a world leader in low-density ammonium nitrate production and fully integrated rock fragmentation services.

the future of mining
the largest
solution is
Never stop
cause we know
our products
creating opp

Evolu

in Latin America
forward thinking.
ologies and ideas,
nique. That's why
s tailor-made,
create a brighter

anges

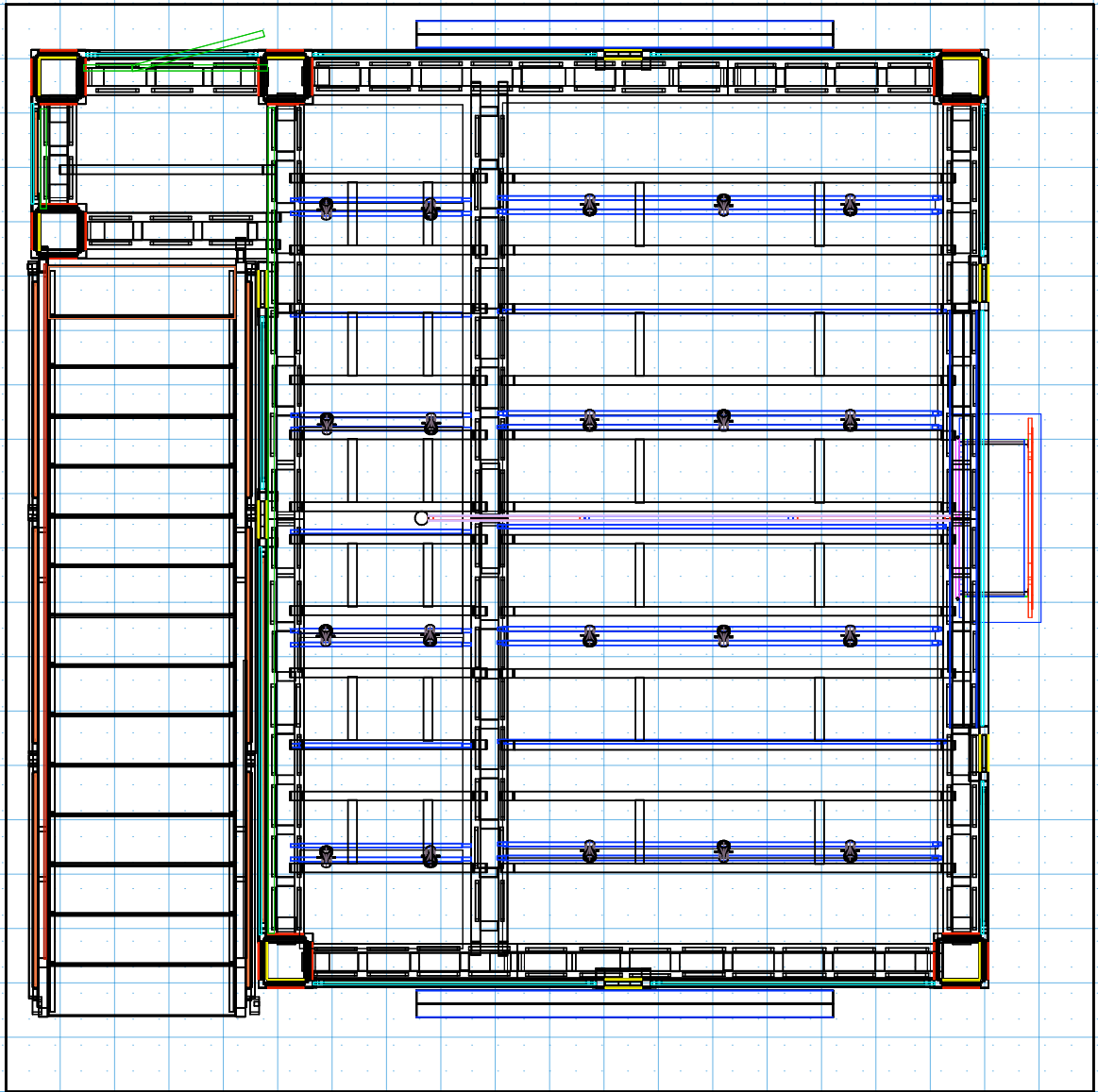


 **Enaex**
Britanite

The future of mining is what we create together. As one of the largest explosives manufacturers in Latin America, our reputation is built on progress and forward thinking. We never stop investing in new technologies and ideas, because we know each challenge is unique. That's why our products and services are always tailored-made. By creating opportunities with you, we create a brighter world for everyone.

**Evolution that changes
our future**

 **Enaex**



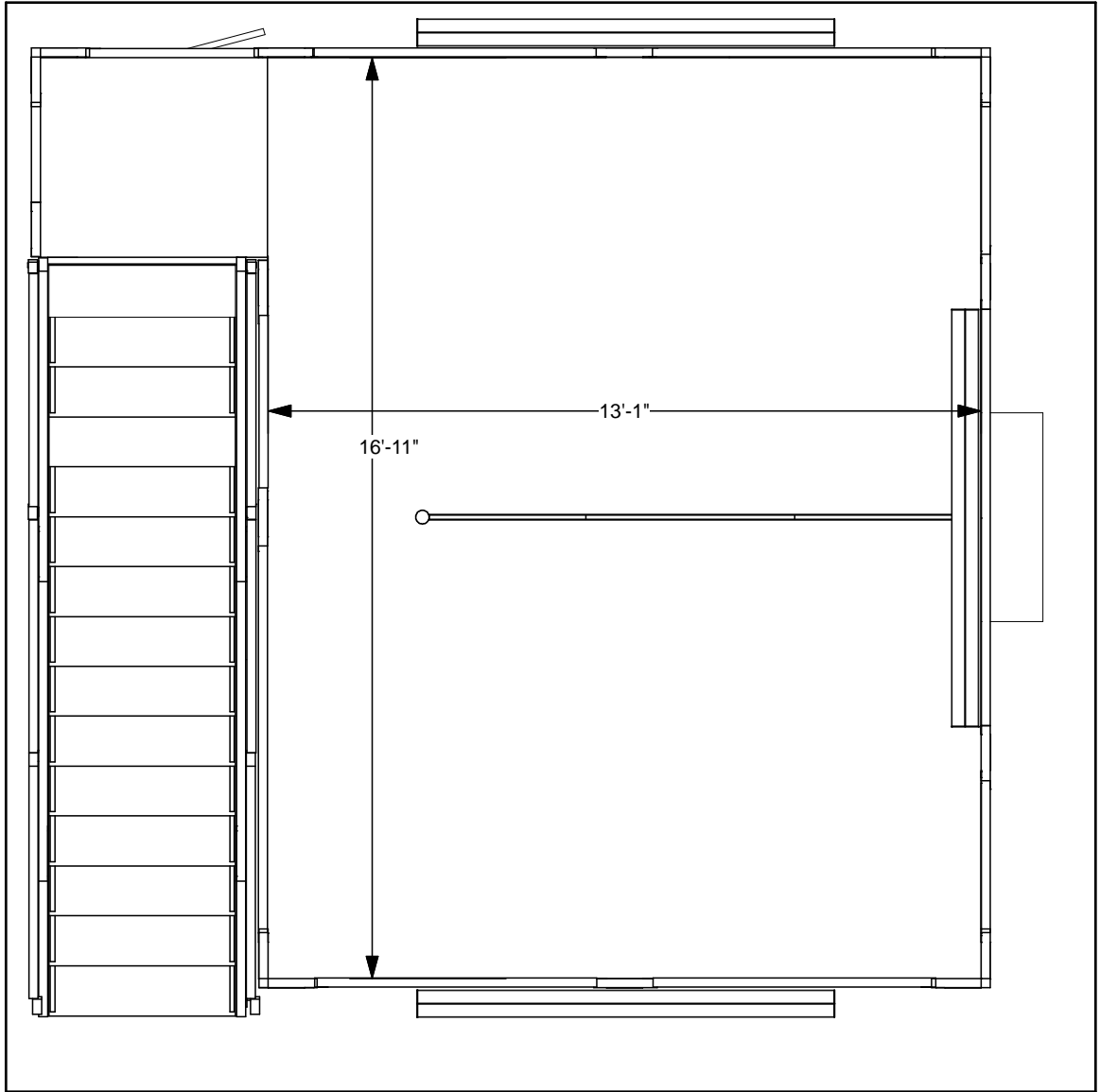
DESIGN : MA2020V3-DD

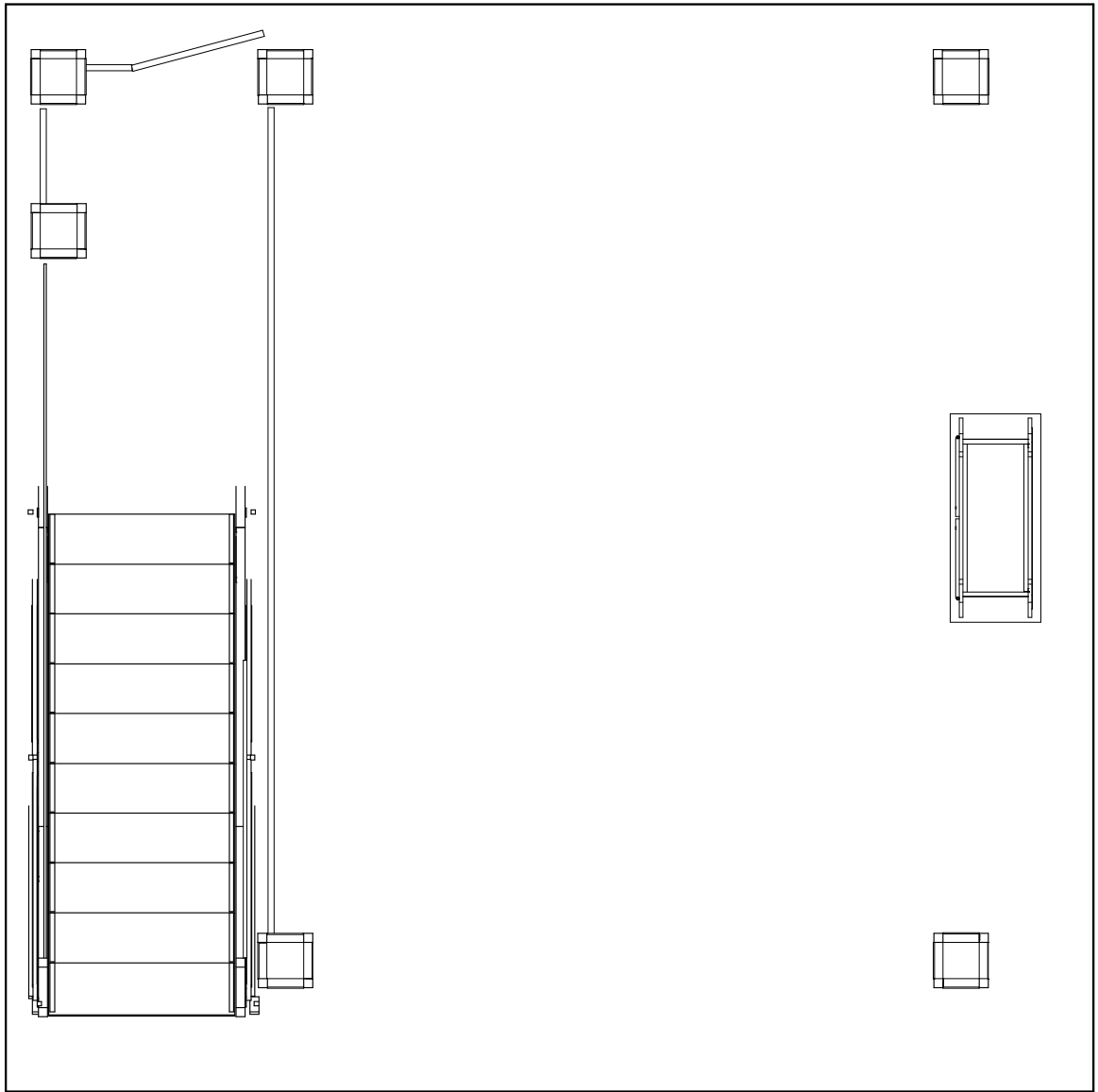
Image Turnkey Rentals 818-563-3322

818-563-3322 20X20

© 2020

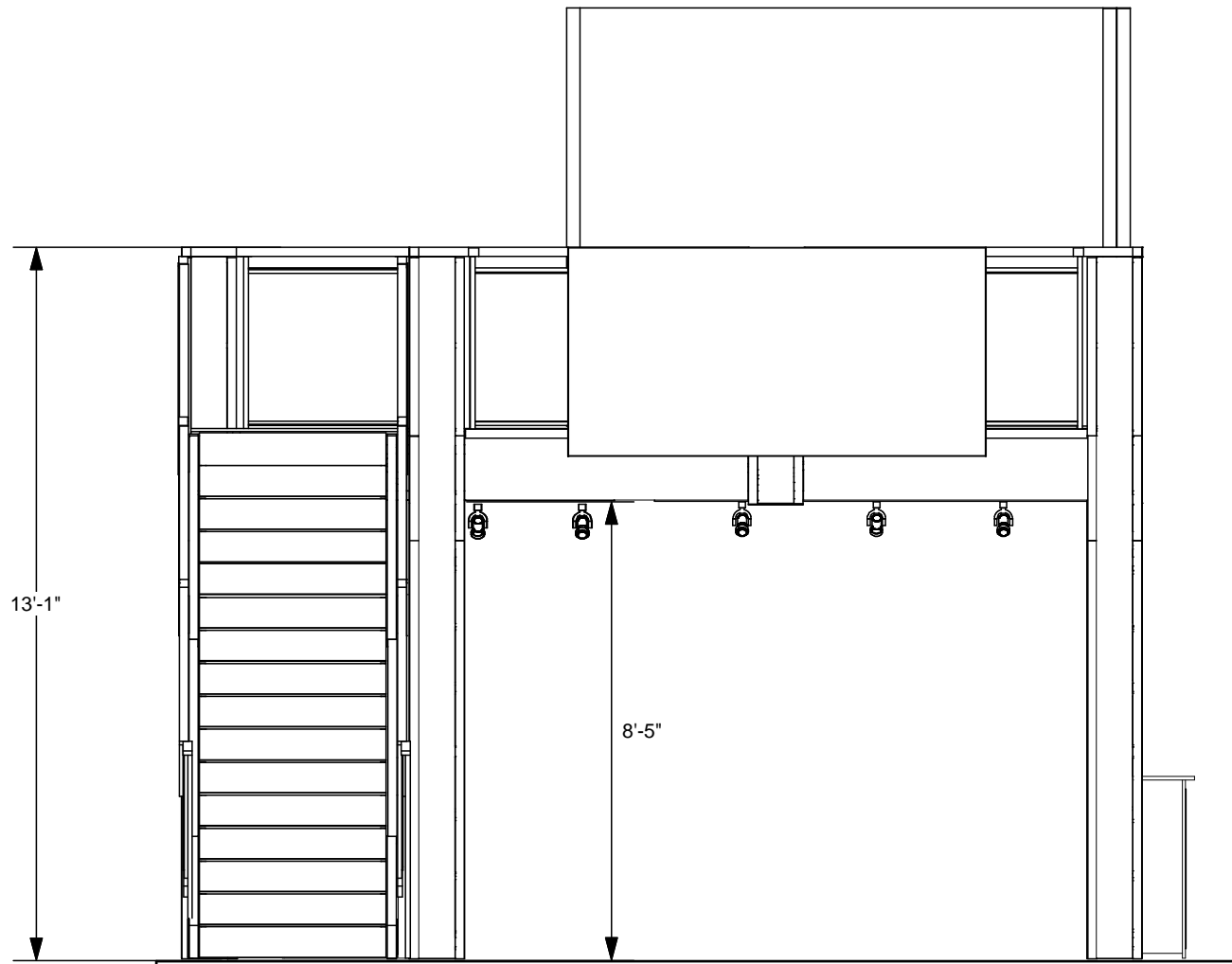
The designs shown herein are protected by copyright and other laws. This document is to be maintained in confidence. No portion of the information or design shown herein may be reproduced, electronically or otherwise, nor may any display be made from this design without written consent.





DESIGN : MA2020V3-DD Image Turnkey Rentals 818-563-3322 REFERENCE: 20X20 © 2020

The designs shown herein are protected by copyright and other laws. This document is to be maintained in confidence. No portion of the information or design shown herein may be reproduced, electronically or otherwise, nor may any display be made from this design without written consent.



DESIGN : MA2020V3-DD

Image Turnkey Rentals

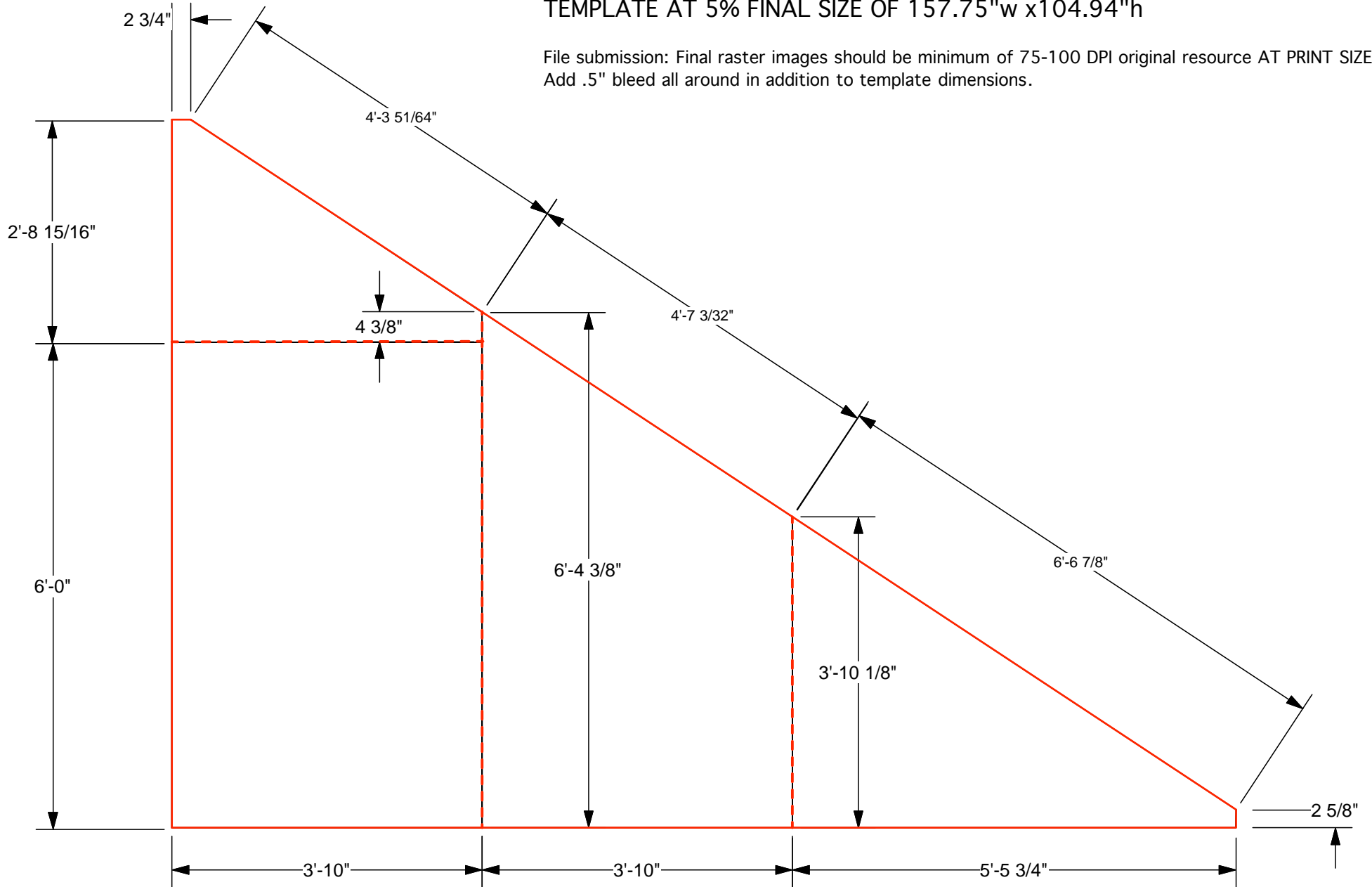
8818-563-3322

© 2020

The designs shown herein are protected by copyright and other laws. This document is to be maintained in confidence. No portion of the information or design shown herein may be reproduced, electronically or otherwise, nor may any display be made from this design without written consent.

TEMPLATE AT 5% FINAL SIZE OF 157.75"w x104.94"h

File submission: Final raster images should be minimum of 75-100 DPI original resource AT PRINT SIZE. Add .5" bleed all around in addition to template dimensions.



DESIGN : STAIR ANGLE WALL - TEMPLATE

Image Turnkey Rentals

818-563-3322

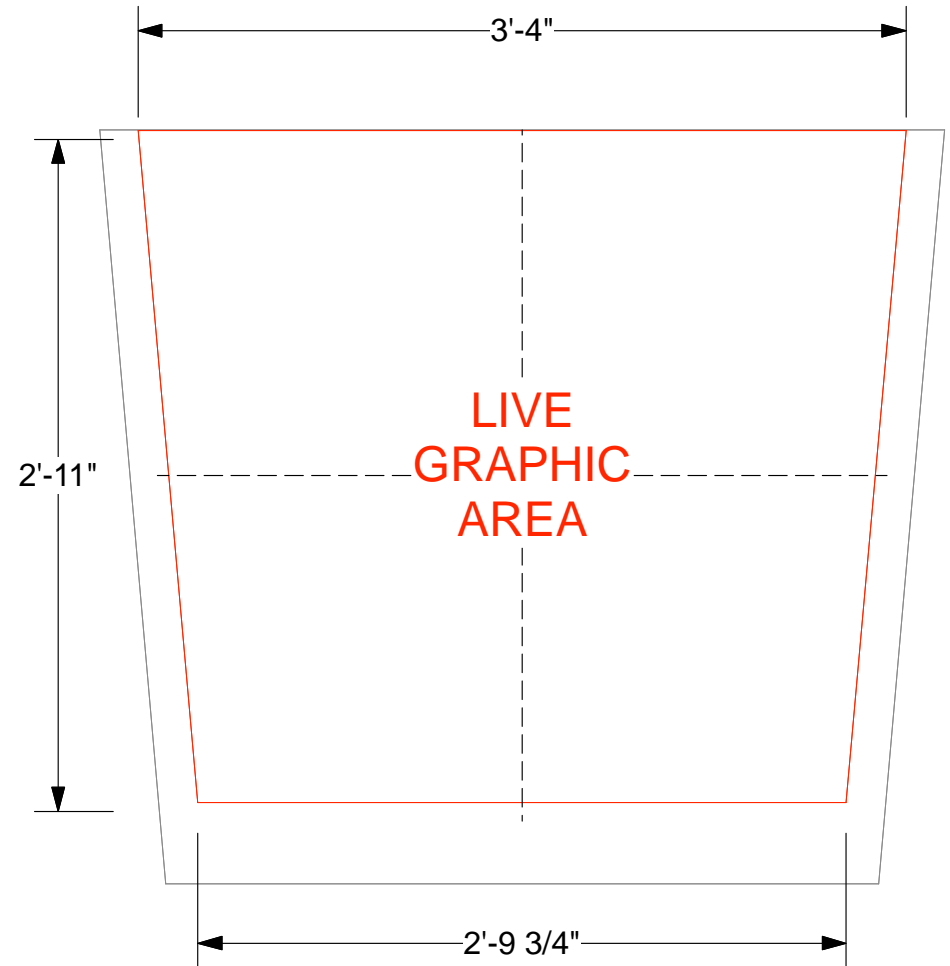
The designs shown herein are protected by copyright and other laws. This document is to be maintained in confidence. No portion of the information or design shown herein may be reproduced, electronically or otherwise, nor may any display be made from this design without written consent .

EV2 STANDALONE COUNTER - STANDARD FRONT GRAPHIC SPECIFICATIONS

Graphic will be created as a low-tac adhesive fabric decal,
for one time use application.
Graphics must be reprinted for additional events.

Template shows maximum live graphic size of 40"w (at top) x 35"h.
Profile cut art may be smaller, and will be centered on counter front.
Vector cut lines must be provided in supplied art files for profile cut decals.
White laminate counter front will be visible around decal.

Please provide .5" bleed at all edges in art files.



- COUNTER, 44"w x 39.25"h total dimension of front
- MAXIMUM LIVE GRAPHIC AREA, 40"w x 35"h